

## Puppy HW Profiles Manager

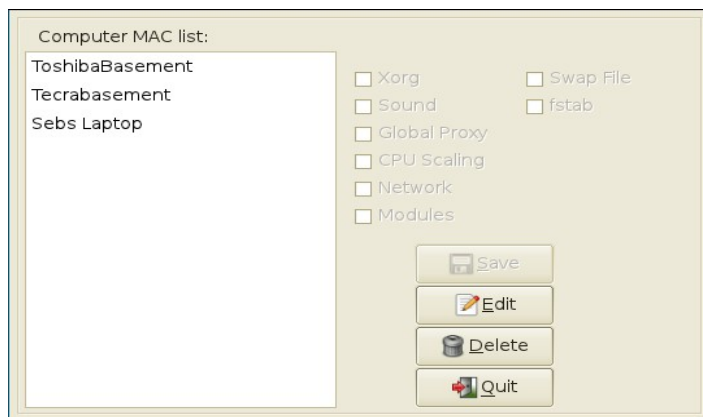
### V1.0 Shakedown

Usually Puppy Linux is very well behaved and picks up most configurations automagically. In case some “detailing” is needed to the config files or you move your USB drive from computer to computer, this programs helps you manage those small modifications to configuration files.

Program is designed to reside under /root...  
...and the Rox Appdir name should be 'puppy\_profiles'

If you wish to change this, locations have to be changed on the source programs and recompiled with BaCon. Source programs are located under the ./src directory. Most newer versions of Puppy contain BaCon, but if it is not available, it can be downloaded from: <http://www.basic-converter.org/> or download the latest Puppy. The code was developed for version .28 and hug dynamic libray is needed to execute phwpman executable.

This package consists of 2 programs, 1 config file and several subvolumes that will be created depending on wether you want your bootable USB stick or CD-Rom to remember this specific computer.

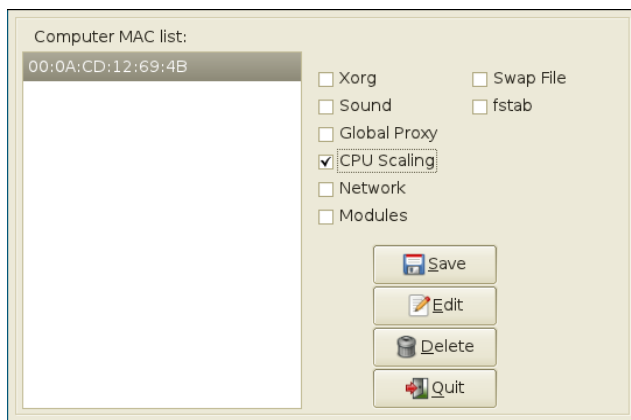


How it works,

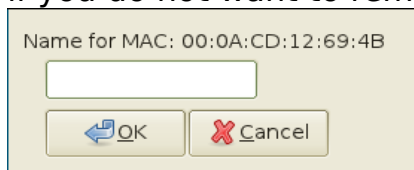
Upon startup of phwpman, if the program has never run, you will be presented with a window with the current's box MAC address. (MAC is the Media Access Control address, every compute that wants to connect to a network must have a unique MAC address. [http://en.wikipedia.org/wiki/MAC\\_address](http://en.wikipedia.org/wiki/MAC_address))

From there, you can select the MAC for your computer. If you have mutiple MAC's on the list, the SAVE button will not enable unless the MAC you selected is the current MAC from the computer you are using. You can still delete, and rename the entries list though.

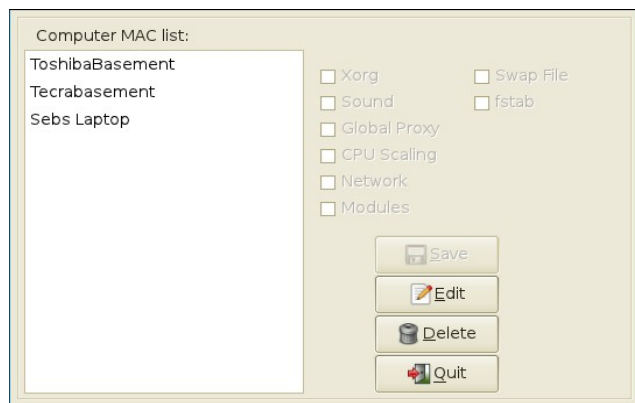
Once you select a MAC and it is avaiable, you may select the type of configuration files to save, and click on the save button. This will copy the current configuration files and store them under a direcotry named under the current MAC. Everytime you change a configuration file and you want it saved, you have to run phwpman, click on the MAC address or name, and click on save to copy the current configuration file as is.



You can select any MAC address and click on Edit. This will prompt you for a name if you do not want to remember MAC addresses.



You type in the name and the name is replaced in the list, and stored on a configuration file



On this first release, What is saved is: (as of version 1.0)

For X:

'/etc/X11/xorg.conf

'/etc/xinitrc

For Sound:

'/etc/asound.state

'/etc/asound.conf

CPU scaling

'Store /etc/rc.d/init.d/wcpufreq

'/etc/wcpufredriver ... which one is used..?

Network Proxy (Barry's 'proxy-setup.bac')

'/etc/profile.d/http\_proxy'

'/etc/profile.d/ftp\_proxy'

Modules, Network, Swap, and FSTAB do not do anything yet.

Check the procedure "process\_options" under phwpman.bac source file, to add more files. I will add more options as suggestions come in and as I have some spare time...

**One last note, detecting the MAC address on boot is kind of tricky. I have tried setting up the 'phwp' execution code on the /etc/rc.d/rc.sysinit code at different places and it looks like it depends on the speed and type of computer. On some computers it is detected quite fast, and on my son's laptop (Acer 5517 AMD TF-20) it was consistently reported late on the rc.sysinit execution. Although at this time, the saved options are not that boot time dependent, it may be needed at some time to detect the MAC address quite fast as to change some more specific changes if needed.**

## **Installation**

The second part of the program is phwp, which runs at boot time and restores the saved configuration files.

I have not automated the install of the following snippet of code:

```
#####PHWP#####  
#GCL  
  
ls /sys/class/net  
#Run Puppy HW profiles  
echo "PUPPY PROFILES"  
echo -n "Loading puppy profiles..." >/dev/console  
/root/puppy_profiles/phwp  
status_func 0
```

This code has to be inserted on /etc/rc.d/rc.sysinit before this code...

```
#####WAIT MODULES LOADED#####  
echo "WAIT MODULES LOADED"
```